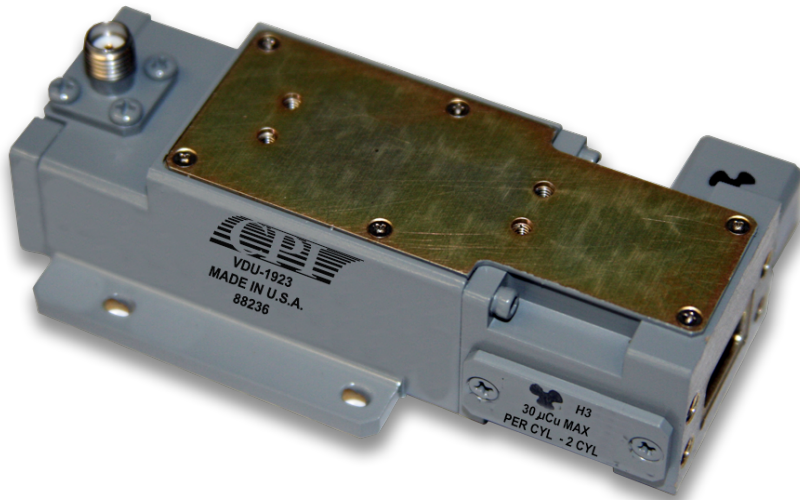


## CPI Electron Device Business - Receiver Protector



With a history of producing high quality products, we can help your with receiver protector.

Contact us at [ElectronDevices@cpi-edb.com](mailto:ElectronDevices@cpi-edb.com) or at call us at +1 978-922-6000.

### FEATURES:

- High power
- Wide pulse, high duty operation
- Small size

### BENEFITS:

- World's largest manufacturer of receiver protectors
- State of the art facility with high level of vertical integration
- Extensive high power test capability
- In-house environmental tes facility
- Computer modeling and automatic test capabilities

### APPLICATIONS:

- Missile seekers
- Airborne radars
- Unmanned Aerial Vehicles (UAV)
- Ground based systems
- Naval radars
- Air traffic control radars
- Weather radars

# CPI EDB Ku-Band 4 kW Receiver Protector: VDU1923

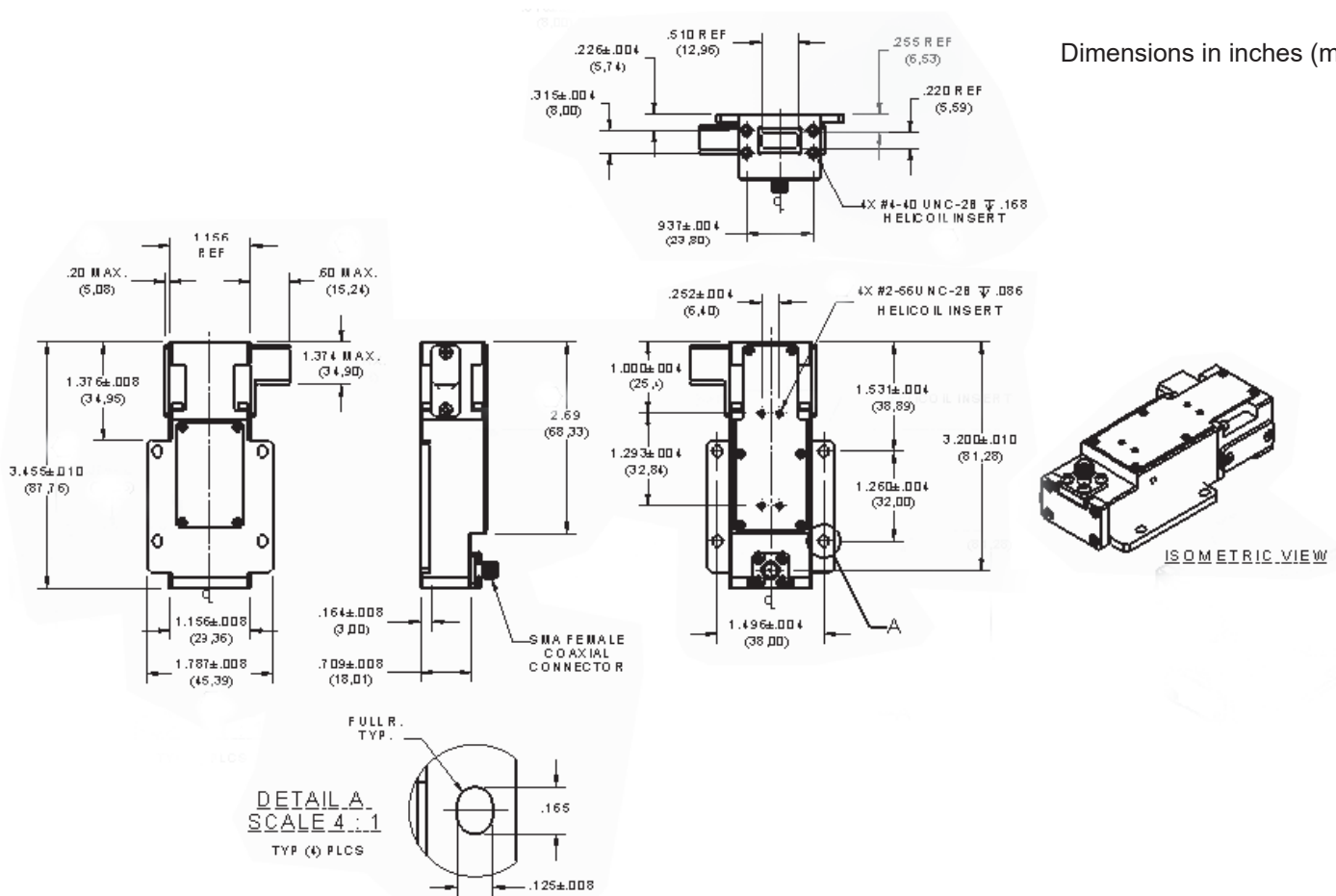
## Electrical Specifications

Operating frequency	16.75 – 17.25 GHz
Maximum overload power	4000 W peak
Maximum operating power	400 W peak
Maximum pulsewidth	100 uSec
Maximum duty cycle	10%
Maximum insertion loss @ 23 ° C	1.1 dB
Maximum VSWR	1.4:1
Maximum spike leakage power	+17 dBm
Maximum flat leakage power	+15 dBm
Maximum recovery time ( -3dB)	1.0 uSec

## Mechanical and Environmental Specifications

RF input	WR51
RF output	SMA(F)
Dimensions	See outline drawing
Operating temperature	-40° to +66 ° C

Dimensions in inches (mm)



**Beverly Microwave Division**  
150 Sohler Road  
Beverly, Massachusetts  
USA 01915

tel +1 978-922-6000  
email [ElectronDevices@cp-edb.com](mailto:ElectronDevices@cp-edb.com)  
fax +1 978-922-8914  
web [www.cpi-edb.com](http://www.cpi-edb.com)

For more detailed information, please refer to the corresponding CPI EDB technical description if one has been published, or contact CPI EDB. Specifications may change without notice as a result of additional data or product refinement. Please contact CPI EDB before using this information for system design.

©2025 CPI Electron Device Business. Company proprietary; use and reproduction is strictly prohibited without written authorization from CPI EDB.